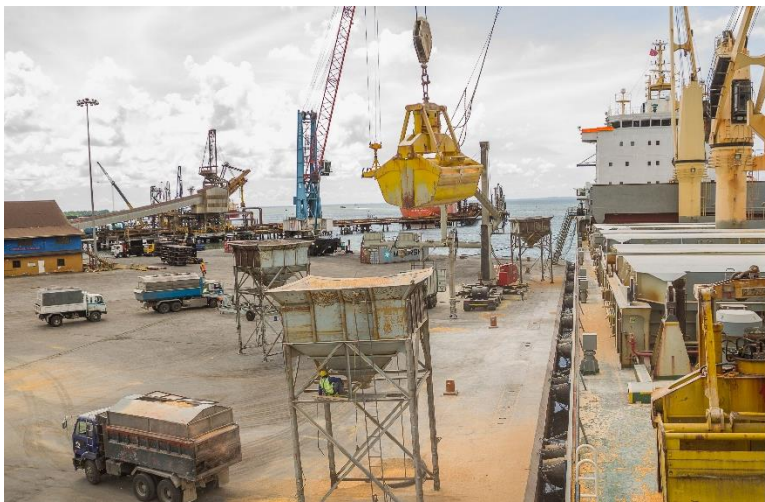




# Point Lisas Industrial Port Development Corporation Limited

## Port Tariff for the Port of Point Lisas

Effective from May 01, 2024 and valid until further notice



## TABLE OF CONTENTS

1.0 MARINE CHARGES - PLIPDECO .....	.3
2.0 CARGO HANDLING - CONTAINERIZED CARGO .....	.5
3.0 CARGO HANDLING - BREAK BULK CARGO.....	.8
4.0 CARGO HANDLING - GENERAL CHARGES.....	10
5.0 WAREHOUSE SERVICES - LESS THAN CONTAINER LOAD (LCL) IMPORTS .....	13
6.0 WAREHOUSE SERVICES - LESS THAN CONTAINER LOAD (LCL) EXPORTS.....	15
7.0 WAREHOUSE SERVICES - FULL CONTAINER LOAD (FCL) .....	16
8.0 SECURITY SERVICES .....	..17

## GLOSSARY OF ABBREVIATIONS

<b>“BL”</b>	Bill of Lading
<b>“CNTR”</b>	A shipping container: this is a standardized reusable steel box used for the storage and movement of materials and products
<b>“CBM”</b>	Volume unit of measure: the cubic metre
<b>“ETA”</b>	Estimated time of arrival: when a ship or vessel is expected to arrive at a specific destination
<b>“FCL”</b>	Full Container Load: full container shipment
<b>“GRT”</b>	Gross Registered Tonnage: this is the volume of space within the hull and enclosed space above the deck of a merchant ship, which are available for cargo, stores, fuel, passengers and crew
<b>“IMO”</b>	International Maritime Organization: the IMO facilitates cooperation on technical matters affecting merchant shipping and traffic, including improved maritime safety and prevention of marine pollution
<b>“IMDG”</b>	International Maritime Organization Dangerous Goods Code: an international code for the maritime transport of dangerous goods in packaged form
<b>“LCL”</b>	Less than Container Load: a partial container load that is usually consolidated with other goods to fill a container
<b>“LO/LO”</b>	Lift On/Lift Off: a cargo handling technique involving the transfer of cargo to and from the ship using shore cranes or ship’s gear
<b>“MOVE”</b>	The activity to get general cargo/containerized cargo from one location to another, both on a vessel and in the yard
<b>“MT”</b>	Metric Tonne: (1 tonne = 1,000 kilograms)
<b>“RO/RO”</b>	Roll On/Roll Off: a feature in ships where ramps are lowered to the docks or quay so forklifts and other vehicles can drive into the belly of the ship, rather than be lifted aboard
<b>“RS&amp;D”</b>	Receiving, Storage and Delivery: regarded as non-direct delivery
<b>“TEU”</b>	Twenty-foot Equivalent Unit: a measurement of shipping volume

## 1.0 MARINE CHARGES – PLIPDECO

- **ADVANCE DEPOSITS MUST BE PAID 24 HOURS BEFORE BERTHING FOR ALL NON-CONTAINERIZED VESSELS, INCLUSIVE OF TUGS/WORKBOATS**
- **PILOTAGE/TOWAGE IS MANDATORY FOR VESSELS OVER 50 METRES GRT**

NO.	DESCRIPTION	RATE US\$	PER	NOTES
<b>1.1 TERMINAL USER CHARGE - FOR USE OF BERTHING FACILITIES</b>				
1.1.1	Vessel cargo discharge and load	0.10	GRT/DAY	- Or part thereof
1.1.2	Tugs/workboats	76.00	UNIT	- Per two (2) hours or part thereof
1.1.3	Any other purpose other than 1.1.1 and 1.1.2 above	0.42	GRT/DAY	- Or part thereof
<b>1.2 NON-STANDARDIZED VESSELS</b>				
1.2.1	Non-standardized vessels	1,654.00	VESSEL/ DAY	- Barges and other non-standardized vessels
1.2.2	Cancellations of berth occupancy request	76.00	TUG OR WORKBOAT	- Less than two (2) hours prior to the initial required berthing
<b>1.3 MOORING AND UNMOORING - PLIPDECO BERTHS</b>				
1.3.1	Vessel under 1,000 GRT	147.00	MOVE	- Wire Lines: Rate x 2
1.3.2	Vessel 1,000 GRT to 2,000 GRT	191.00	MOVE	<ul style="list-style-type: none"> <li>- Public Holidays:                             <ul style="list-style-type: none"> <li>• Normal Lines: Rate x 2</li> <li>• Wire Lines: Rate x 4</li> </ul> </li> <li>- Dead Ship Berthing/Unberthing: Rate x 2                             <ul style="list-style-type: none"> <li>• Public Holidays: Rate x 3</li> </ul> </li> <li>- Shifting of vessel: Rate x 2                             <ul style="list-style-type: none"> <li>• Public Holidays: Rate x 3</li> </ul> </li> <li>- Cancellation of confirmed shifting request under two (2) hours prior to required operation: equivalent to rate for one (1) move</li> <li>- Cancellation of confirmed berthing /unberthing request under eight (8) hours prior to required operation: equivalent to rate for one (1) move</li> </ul>
1.3.3	Vessel 2,001 GRT to 10,000 GRT	274.00	MOVE	
1.3.4	Vessel above 10,000 GRT	318.00	MOVE	
<b>1.4 MOORING AND UNMOORING - SPECIALIZED TERMINALS</b>				
1.4.1	Vessel under 15,000 GRT	520.00	MOVE	- Wire Lines: Rate x 2
1.4.2	Vessel above 15,000 GRT	0.05	GRT/MOVE	<ul style="list-style-type: none"> <li>- Public Holidays:                             <ul style="list-style-type: none"> <li>• Normal Lines: Rate x 2</li> <li>• Wire Lines: Rate x 4</li> </ul> </li> <li>- Dead Ship Berthing/Unberthing: Rate x 2                             <ul style="list-style-type: none"> <li>• Public Holidays: Rate x 3</li> </ul> </li> <li>- Shifting of vessel: Rate x 2                             <ul style="list-style-type: none"> <li>• Public Holidays: Rate x 3</li> </ul> </li> <li>- Cancellation of confirmed shifting request under two (2) hours prior to</li> </ul>

NO.	DESCRIPTION	RATE US\$	PER	NOTES
				required operation: equivalent to rate for one (1) move - Cancellation of confirmed berthing /unberthing request under eight (8) hours prior to required operation: equivalent to rate for one (1) move
<b>1.5 WATER SUPPLY</b>				
1.5.1	Vessels - berth supplied	12.60	CBM	
* 1.5.2	Vessels - via tank wagon	2.30	CBM	
1.5.3	Port Users	2.30	CBM	- Washing of berths and any other related activities
<b>1.6 FUEL BUNKERING</b>				
1.6.1	Throughput charge for fuel via tank wagon	578.00	TANK WAGON	
1.6.2	Throughput charge for fuel via barge or supply vessel	3,465.00	VESSEL	

## 2.0 CARGO HANDLING - CONTAINERIZED CARGO

NO.	DESCRIPTION	RATE US\$	PER	NOTES
<b>2.1 DISCHARGE AND LOAD - IMPORT OR EXPORT (LO/LO)</b>				
<b>GANTRY CRANE</b>				
2.1.1	Discharge full	259.00	MOVE	- Includes full containers originally loaded as export and subsequently discharged at Agent's request
2.1.2	Discharge full reefer	271.00	MOVE	- Energize/de-energize cost included
2.1.3	Discharge empty	168.00	MOVE	- Includes empty containers originally loaded as export and subsequently discharged at Agent's request
2.1.4	Load full	163.00	MOVE	- Includes full containers originally discharged as import and subsequently reloaded at Agent's request
2.1.5	Load full reefer	174.00	MOVE	- Energize/de-energize cost included
2.1.6	Load empty	168.00	MOVE	- Includes empty containers originally discharged as import and subsequently loaded at Agent's request
<b>SHORE CRANE</b>				
2.1.7	Discharge full	246.00	MOVE	- Includes full containers originally loaded as export and subsequently discharged at Agent's request
2.1.8	Discharge full reefer	258.00	MOVE	- Energize/de-energize cost included
2.1.9	Discharge empty	163.00	MOVE	- Includes empty containers originally loaded as export and subsequently discharged at Agent's request
2.1.10	Load full	155.00	MOVE	- Includes full containers originally discharged as import and subsequently reloaded at Agent's request
2.1.11	Load full reefer	167.00	MOVE	- Energize/de-energize cost included
2.1.12	Load empty	163.00	MOVE	- Includes empty containers originally discharged as import and subsequently loaded at Agent's request
<b>SHIP'S CRANE</b>				
2.1.13	Discharge full	227.00	MOVE	- Includes full containers originally loaded as export and subsequently discharged at Agent's request.
2.1.14	Discharge full reefer	239.00	MOVE	- Energize/de-energize cost included
2.1.15	Discharge empty	150.00	MOVE	- Includes empty containers originally loaded as export and subsequently discharged at Agent's request.
2.1.16	Load full	142.00	MOVE	- Includes full containers originally discharged as import and subsequently reloaded at Agent's request
2.1.17	Load full reefer	154.00	MOVE	- Energize/de-energize cost included
2.1.18	Load empty	137.00	MOVE	- Includes empty containers originally discharged as import and subsequently loaded at Agent's request
<b>CONTAINERS STUFFED AT PLIPDECO'S WAREHOUSE FACILITY (ALL CRANES)</b>				
2.1.19	Load dry	100.00	MOVE	- Only containers stuffed at PLIPDECO's LCL Warehouse will attract these load rates for lift on
2.1.20	Load dangerous/hazardous	220.00	MOVE	- There is no additional cost to transport containers between the Port of Point Lisas and the Warehouse

NO.	DESCRIPTION	RATE US\$	PER	NOTES
	<b>OUT OF GAUGE</b>			
2.1.21	Out of gauge container or requiring special handling	427.00	MOVE	- Special handling required when neither spreader nor frame can be used by itself or the spreader cannot facilitate container or cargo because it exceeds standard parameters - This includes Open Top/Flat Racks, Flatbeds and Containers using wires
	<b>DANGEROUS CARGO</b>			
2.1.22	Tanktainer - flammable substances	706.00	MOVE	
2.1.23	Tanktainer/Containers - non-flammable corrosives, fireworks, arms, ammunition, explosives, and any other class of dangerous cargo	353.00	MOVE	- Direct delivery - If stored in yard, rent is applicable. See 2.12.3.
	<b>GENERAL CARGO</b>			
2.1.24	Equipment/Break Bulk	57.00	MT	- Discharge/load via containerized vessel
<b>2.2 DISCHARGE AND LOAD - TRANSSHIPMENT (LO/LO)</b>				
2.2.1	Discharge and load - dry	85.00	MOVE	
2.2.2	Discharge and load - reefer	96.00	MOVE	- Energize/de-energize cost included
<b>2.3 DISCHARGE AND LOAD - (RO/RO)</b>				
2.3.1	Discharge full	150.00	MOVE	
2.3.2	Discharge empty	150.00	MOVE	
2.3.3	Load full	150.00	MOVE	
2.3.4	Load empty	150.00	MOVE	
2.3.5	Transshipment	78.00	MOVE	
<b>2.4 RESTOW (LAND AND RELOAD CONTAINER)</b>				
2.4.1	Lift On/Lift Off (LO/LO)	150.00	MOVE	- All moves
2.4.2	Roll-On/Roll-Off (RO/RO)	97.00	MOVE	- All moves
<b>2.5 HEAVY LIFT CONTAINER/FLATRACK - ABOVE 40 METRIC TONNES</b>				
2.5.1	Discharge	3,000.00	CNTR	- If container/flatrack exceeds certified maximum weight of the container/flatrack it will not be handled
2.5.2	Load	3,000.00	CNTR	
<b>2.6 CONTAINER SHIFTING</b>				
	<b>VESSEL</b>			
2.6.1	LO/LO	117.00	MOVE	- All moves
2.6.2	RO/RO	78.00	MOVE	- All moves
	<b>YARD</b>			
2.6.3	Full/empty containers	78.00	CNTR	This charge is separate and apart from Receiving, Storing and Delivery (RS&D) charges and applicable to: • Shifting due to extraction of specifically requested container from empty container storage (e.g. food grade, scrap iron) • Full container - seal verification • Container/flat rack made available for fumigation • Positioning container for repairs • Full container to be returned to Shipper/Exporter
2.6.4	Empty containers for sealing/removing of seals	5.35	CNTR	- Upon Agent's request
<b>2.7 REEFER CONTAINER CHARGES</b>				
2.7.1	Electricity charge	33.00	CNTR/DAY	- Or part thereof
2.7.2	Pre-testing	78.00	CNTR	- Positioning of containers for pre-testing

NO.	DESCRIPTION	RATE US\$	PER	NOTES
<b>2.8 OTHER CONTAINER CHARGES</b>				
2.8.1	Containers arriving at the gate with debris and old placards	54.00	CNTR	- Debris applying to empty containers only
2.8.2	Securing flatrack stanchions or stacking of flatracks/containers	26.00	CNTR	- The individual container rate for loading will be applicable
<b>2.9 MINIMUM HANDLING CHARGE (DISCHARGE/LOAD)</b>				
2.9.1	Containerised operations	6,600.00	VESSEL	
<b>2.10 LABOUR STANDBY</b>				
2.10.1	Labour standby	1,554.00	GANG/HR	- Or part thereof - Standby charges begin to accrue two (2) hours after the commencement of each shift (0700/1500, 1500/2300 and 2300/0700) - The charge is applicable if cumulative operational delays >60 minutes per shift
<b>2.11 CONTAINER STUFFING/UNSTUFFING AT TERMINAL</b>				
2.11.1	Dry container	168.00	TEU	Minimum charge - US\$672.00 (4 TEU equivalent)
2.11.2	Reefer	227.00	TEU	Minimum charge - US\$908.00 (4 TEU equivalent)
<b>2.12 STORAGE RENT AT TERMINAL</b>				
<b>CONTAINER/FLATRACK/PLATFORM/TRANSSHIPMENT - FULL</b>				
2.12.1	First chargeable eight (8) days	20.00	TEU/DAY	- Rent is applicable from the day after the vessel discharge is completed and is charged on a full day basis or part thereof  - <b>Free Storage Days:</b> • Local Imports: 5 Business Days • Export Cargo: 14 Calendar Days • Transshipment: 14 Calendar Days  - <b>For B/L of 5 or more containers</b> from the same vessel: • Free storage period to increase by five (5) additional Business Days
2.12.2	After first chargeable eight (8) days	42.00	TEU/DAY	
<b>DANGEROUS CARGO/TANKTAINER/CONTAINER STORAGE CHARGES - FULL</b>				
2.12.3	Fireworks, arms, ammunition, explosives, and any other class of dangerous cargo	289.00	CNTR/DAY	- Applicable if not direct delivery and stored in yard due to extenuating circumstances - Rent applicable from date/time of discharge - Security charges also applicable (see tariff item 8.3)
<b>CONTAINER/FLATRACK/PLATFORM - EMPTY</b>				
2.12.4	In excess of agreed pool limit	10.50	TEU	- Or part thereof. - Invoiced as per number of empties in yard every Sunday over the agreed pool multiplied by 3.5 days
2.12.5	Shipping lines/owners without a pool	10.50	TEU	- Invoiced as per number of empties in yard every Sunday multiplied by 3.5 days
<b>2.13 CHASSIS ON PORT</b>				
2.13.1	Chassis on port	33.00	DAY	- Or part thereof
<b>2.14 WEIGHBRIDGE</b>				
2.14.1	Port related business	12.00	CNTR	- If container/flatrack exceeds certified maximum weight of the container/flatrack it will not be allowed entry into the Port
2.14.2	Non-port related business	24.00	CNTR	



## 3.0 CARGO HANDLING - BREAK BULK CARGO

▪ **ADVANCE DEPOSITS MUST BE MADE 24 HOURS BEFORE BERTHING**

NO.	DESCRIPTION	RATE US\$	PER	NOTES
<b>3.1 BULK CARGO – THROUGHPUT</b>				
3.1.1	Fertilizer, sugar, salt, feed, glass, limestone	5.00	MT	- For other commodities, throughput charge is negotiable
<b>3.2 SPILLAGE CLEAN UP</b>				
3.2.1	Spillage clean-up for throughput operations	1,650.00	VESSEL	
<b>3.3 RENTAL OF HOPPER</b>				
3.3.1	Rental of hopper	500.00	SHIFT	
<b>3.4 EQUIPMENT</b>				
3.4.1	Equipment	35.00	MT	
<b>3.5 STEEL PRODUCTS</b>				
3.5.1	Import	30.00	MT	- RS&D
3.5.2	Export	30.00	MT	- RS&D
<b>3.6 GENERAL CARGO (BREAK BULK)</b>				
3.6.1	Non-direct delivery	27.00	MT OR CBM	- Charges are based on the greater of weight (metric tonnes - MT) or volume (cubic metre - CBM)
3.6.2	Direct delivery	26.00	MT OR CBM	
3.6.3	Throughput fee	9.00	MT OR CBM	
<b>3.7 MOBILE UNITS (IMPORT/EXPORT)</b>				
3.7.1	Motor vehicles (drive on/ drive off)	35.00	MT	- Not to exceed 40 tonnes
3.7.2	Heavy equipment (drive on/ drive off)	60.00	MT	- Excess weight must be negotiated in advance
3.7.3	Handling Charge (immobile unit)	330.00	MOVE	- Removal from berth to storage of non-mobile equipment
<b>3.8 LAND &amp; RELOAD</b>				
3.8.1	Land & reload	30.00	MT	
<b>3.9 TANDEM LIFT</b>				
	<b>SHIP'S CRANE (SHIP'S CREW)</b>			
3.9.1	40 MT TO 60 MT	55.00	MT	- Calculated on a direct delivery basis
3.9.2	61 MT TO 100 MT	60.00		
3.9.3	101 MT TO 200 MT	65.00		
3.9.4	Over 200 MT	150.00		
	<b>SHORE CRANE</b>			
3.9.5	Shore Crane (discharge/load)	5,000.00	UNIT	< 40 MT
3.9.6	Shore Crane (discharge/load)	6,500.00	UNIT	> 40 MT to 60 MT
3.9.7	Shore Crane (discharge/load)	8,000.00	UNIT	> 60 MT to 140 MT
3.9.8	Shore Crane (storage/delivery)	4,500.00	UNIT	< 40 MT
3.9.9	Shore Crane (storage/delivery)	6,000.00	UNIT	> 40 MT to 60 MT
3.9.10	Shore Crane (storage/delivery)	7,500.00	UNIT	> 60 MT to 140 MT
<b>3.10 HEAVY LIFT- DIRECT DELIVERY (SINGLE PIECE OF CARGO 40MT OR GREATER)</b>				
3.10.1	Ship's crane (Ship's Crew)	45.00	MT	- For weights 40 MT and over, refer to sections 4.2 & 4.3 for related charges
3.10.2	Shore crane – 40 MT to 60 MT	3,000.00	LIFT	- For weights 40 MT and over, refer to sections 4.2 & 4.3 for related charges. - Maximum Allowable: 120 MT/10 Metre Radius
3.10.3	Shore crane – 61 MT to 100 MT	4,500.00		
3.10.4	Shore crane – 101 MT to 120 MT	6,000.00		

NO.	DESCRIPTION	RATE US\$	PER	NOTES
<b>3.11 TRANSSHIPMENT</b>				
3.11.1	Discharge	22.00	MT/CBM	
3.11.2	Load	22.00	MT/CBM	
<b>3.12 SHIFTING</b>				
3.12.1	Standard labour	20.00	MT/CBM	
3.12.2	Extra labour	25.00	MT/CBM	
<b>3.13 MINIMUM HANDLING CHARGE (DISCHARGE/LOAD)</b>				
3.13.1	All general cargo	6,600.00	VESSEL	- Discharge/Load
<b>3.14 LABOUR STAND-BY</b>				
3.14.1	Labour stand-by	1,452.00	HOUR/ GANG	- Or part thereof - Standby charges begin to accrue two (2) hours after the commencement of each shift (0700/1500, 1500/2300 and 2300/0700) - Cumulative operational delays > 60 minutes per shift, the charge is applicable.
<b>3.15 EQUIPMENT WASH</b>				
3.15.1	Equipment wash	275.00	UNIT	- By Request Only
<b>3.16 EQUIPMENT HIRE - VESSEL HATCH</b>				
3.16.1	3 MT - 6 MT Forklift	330.00	SHIFT/ UNIT	- Or part thereof
3.16.2	8 MT - 15 MT Forklift	440.00	SHIFT/ UNIT	- Or part thereof
3.16.3	Truck & trailer	440.00	SHIFT/ UNIT	- Or part thereof
3.16.4	Mobile Harbour Crane	2,970.00	SHIFT/ UNIT	- Or part thereof
<b>3.17 DUNNAGE</b>				
3.17.1	Dunnage discard	1,700.00	GANG/ SHIFT	
3.17.2	Dunnage supply	1,700.00	VESSEL	- For vessels that are unable to provide dunnage for safe storage
<b>3.18 STORAGE RENT AT TERMINAL - BREAK BULK</b>				
- Rent free period starts the day after vessel discharge and is charged up to the time of delivery				
- Free storage (Business Days) for single B/L with the following consignment range:				
<ul style="list-style-type: none"> <li>• &lt;100 MT= 5 days</li> <li>• 100 MT to 999 MT= 10 days</li> <li>• 1,000 MT to 1,999 MT= 20 days</li> <li>• For 2,000 MT and greater, each additional 1,000 MT = 5 additional days</li> <li>• Export Cargo: 14 calendar days</li> <li>• Transshipment: 14 calendar days</li> </ul>				
- ** Applicable charge will be based on the greater of weight (MT) or volume (CBM)				
3.18.1	First chargeable seven days	1.00	DAY/**	Or part thereof (import & export only)
3.18.2	After the seventh chargeable day	2.50	DAY/**	Or part thereof (import & export only)
3.18.3	Heavy Lift Cargo - single piece of cargo 40MT or greater	7.00	DAY/**	- Or part thereof - Storage rent applicable from the day after cargo is discharged - Rent is not applicable for direct delivery
3.18.4	Transshipment only - less than 40 MT	1.50	DAY/**	Or part thereof
3.18.5	Transshipment only - Heavy Lift (single piece of cargo 40MT or greater)	7.00	DAY/**	Storage rent is applicable after seven (7) free calendar days
3.18.6	Cargo stored longer than 3 months	12.00	DAY/**	

## 4.0 CARGO HANDLING - GENERAL CHARGES

NO.	DESCRIPTION	RATE US\$	PER	NOTES
<b>4.1 HATCH COVERS</b>				
4.1.1	Crane and spreader bar	71.00	MOVE	
4.1.2	Using drop wires & gears	141.00	MOVE	- Applicable to all vessels
<b>4.2 HEAVY LIFT - EXCESS WEIGHT SURCHARGE</b>				
4.2.1	Heavy lift excess weight surcharge	12.00	MT	- For each metric tonne in excess of 80 MT delivered from Port (import) or received on Port (export)
<b>4.3 HEAVY LIFT (NON-DIRECT DELIVERY- SHORE CRANE)</b>				
4.3.1	From berth to terminal storage	4,235.00	MOVE	- Maximum allowable weight 120 MT
4.3.2	From terminal storage to transport	4,235.00	MOVE	
<b>4.4 LABOUR - (PUBLIC HOLIDAY)</b>				
4.4.1	Ship, shore & yard	5,179.00	GANG/SHIFT	- Or part thereof
4.4.2	Ship & shore	3,237.00	GANG/SHIFT	- Or part thereof
4.4.3	Yard	1,942.00	GANG/SHIFT	- Or part thereof
<b>4.5 LABOUR - MEAL BREAK</b>				
4.5.1	Labour - operations during meal break	906.00	GANG/SHIFT	
<b>4.6 OVERTIME DELIVERY - CONTAINER/BREAK BULK</b>				
4.6.1	2300 to 0700 hours on Monday to Friday	972.00	8 HOUR SHIFT	- Or part thereof
4.6.2	Saturdays and Sundays	2,590.00	8 HOUR SHIFT	- Or part thereof
4.6.3	Public Holidays	3,884.00	8 HOUR SHIFT	- Or part thereof
<b>4.7 SHORE TO SHIP GANGWAY</b>				
4.7.1	Positioning of gangway alongside	163.00	VESSEL	
<b>4.8 RECEIVE STORE AND DELIVERY OF SHIP SPARES/STORES VIA GATES/VESSEL</b>				
4.8.1	Using port equipment	1,554.00	VESSEL	- Discharge/load
4.8.2	Throughput charge	473.00	VESSEL	- Monday to Friday - 0700 to 2300 hours
		1,424.00	VESSEL	- Public Holidays
		945.00	VESSEL	- Any other time
<b>4.9 CHANGE OF CONTAINER STATUS</b>				
4.9.1	Change of line, container status	51.00	CNTR	- An additional charge for line change, container status change or category change to local, transshipment, full, empty or any combination during and after vessel operations - Containers arriving at the Gate with incorrect booking status e.g. IMDG cargo
<b>4.10 RE-HANDLING CONTAINERS DURING DELIVERY AT THE OUT-GATE</b>				
4.10.1	Re-handling containers during delivery at the Out-Gate back into storage	70.00	CNTR	
<b>4.11 STOWAGE INFORMATION</b>				
4.11.1	Stowage information by hard copy or incompatible electronic file	6.42	CNTR	- Document or electronic file that do not conform with the established Baplie format requires manual data entry
4.11.2	Manual creation of vessel plan in Terminal Operating System	235.00	VESSEL	- Where NSD file format is not provided and vessel plan needs to be created in system

NO.	DESCRIPTION	RATE US\$	PER	NOTES
4.11.3	Planner Boarding Vessel	107.00	BOARDING	- Request by vessel or Agent
<b>4.12 DOCUMENTATION</b>				
4.12.1	Documentation late fee	388.00	VESSEL	- For documents (discharge load lists/plans and special instructions) submitted less than 16 hour prior to ETA or any other agreed deadlines with the Port and Agency
4.12.2	Processing break bulk manifest to record the appropriate marks to identify cargo	118.00	VESSEL	
4.12.3	Change made to Baplie/ stowage data prior to vessel arrival later than cut off time	24.00	CNTR/PER CHANGE	- Any change to Baplie or cargo listing already submitted, including corrections to Line(s) information per vessel e.g. status, location or any other changes prior to vessel arrival
4.12.4	Change made to Baplie/ stowage data during the vessel operation	47.00	CNTR/PER CHANGE	- Any change to Baplie or cargo listing already submitted, including corrections to Line(s) information per vessel e.g. status, location or any other changes
4.12.5	Incorrect placard and listing of containers/tanktainers	118.00	CNTR	
4.12.6	Container rolled over to new vessel	24.00	CNTR	
4.12.7	Late gate request for export containers	24.00	CNTR	- Containers for loading arriving at the Gate less than 12 hours prior to the ETA of the vessel
4.12.8	Requests for reprint/ provision of gate tickets	6.42	DOCUMENT	
<b>4.13 HANDLING OF OUT-OF-GAUGE (OOG) CARGO</b>				
4.13.1	Receipt or delivery of Out-of-Gauge (OOG) cargo	235.00	CNTR	- Use of labour and additional gear
<b>4.14 REEFER HANDLING</b>				
4.14.1	Energize/de-energize	12.00	CNTR	
<b>4.15 SPECIALIZED HANDLING</b>				
4.15.1	Cargo requiring specialized handling	2,970.00	8 HOUR SHIFT	Charge applicable for: - Unstuffing/stuffing cargo that requires Shore Crane for handling due to the configuration - Receiving/delivering of cargo
<b>4.16 OFFSITE STORAGE FACILITY - CONTAINERS/CHASSIS AND BREAK BULK CARGO</b>				
4.16.1	Temporary parking of container/chassis	9.25	CHASSIS OR CNTR/DAY	- Or part thereof - Rate applicable to full and empty container on customer's chassis or empty chassis
4.16.2	Temporary open storage rental rate for break bulk cargo	0.46	SQUARE METRE/DAY	- Or part thereof
4.16.3	Monthly open storage rental rate for break bulk cargo	10.50	SQUARE METRE/MO NTH	- Or part thereof - Minimum storage area of 780 square meters (m <sup>2</sup> )
4.16.4	Receipt or delivery of cargo using PLIPDECO's labour and equipment	1,554.00	8 HOURS	- Or part thereof - Entails use of labour and equipment (forklift maximum capacity - 12 tonnes)

NO.	DESCRIPTION	RATE US\$	PER	NOTES
<b>4.17 USE OF PORT SPACE FOR THE PREPARATION OF CARGO</b>				
4.17.1	Use of port space without port equipment (without labour)	1,050.00	8 HOURS	- Or part thereof
4.17.2	Use of port space without port equipment (with labour)	1,575.00	8 HOURS	- Or part thereof - Work area not to exceed 1,600 square feet (ft <sup>2</sup> ) - port equipment not included

## 5.0 WAREHOUSE SERVICES - LESS THAN CONTAINER LOAD (LCL) IMPORTS

NO.	DESCRIPTION	RATE US\$	PER	NOTES
<b>LCL WAREHOUSE</b>				
<b>5.1 STUFFING AND UNSTUFFING</b>				
5.1.1	Dry container	227.00	TEU	
5.1.2	Unpalletized cargo	567.00	TEU	
5.1.3	Dangerous/hazardous cargo	567.00	TEU	
5.1.4	Other cargo (tyres, vehicles, etc.)	476.00	TEU	
<b>5.2 DELIVERY (HANDLING)</b>				
5.2.1	Non-trade cargo	30.00	BILL OF LADING ≤ 3 units	<ul style="list-style-type: none"> <li>- Cargo not requiring Customs entry</li> <li>- US\$3.10 for each additional unit</li> </ul>
5.2.2	Dangerous cargo	199.00	BILL OF LADING ≤ 5 units	<ul style="list-style-type: none"> <li>- As defined by the IMDG Code</li> <li>- US\$10.30 for each additional unit.</li> </ul>
5.2.3	Commercial cargo	46.00	BILL OF LADING ≤ 5 units	<ul style="list-style-type: none"> <li>- For Bill of lading &gt; 5 units an additional charge of US\$46.00 is applicable.</li> </ul>
5.2.4	Transshipment	23.00	BILL OF LADING	
<b>5.3 STORAGE RENT - REGULAR CARGO</b>				
5.3.1	First chargeable six (6) days	2.06	MT/DAY or CBM/DAY	<ul style="list-style-type: none"> <li>- Or part thereof</li> <li>- Free storage of five (5) Business Days</li> <li>- Applicable charge will be based on the greater of weight (MT) or volume (CBM)</li> </ul>
5.3.2	After the sixth chargeable day	3.35	MT/DAY or CBM/DAY	
<b>5.4 STORAGE RENT - TYRES/MOTOR VEHICLES</b>				
5.4.1	Containers	68.00	CNTR/DAY	<ul style="list-style-type: none"> <li>- Or part thereof</li> <li>- Free storage of five (5) Business Days</li> <li>- Applicable charge will be based on the greater of weight (MT) or volume (CBM)</li> </ul>
5.4.2	Lots	680.00	LOT/DAY	<ul style="list-style-type: none"> <li>- Or part thereof</li> <li>- Rent is applicable 24 hours after unstuffed tyres are examined by Bureau of Standards</li> </ul>
<b>VEHICLES</b>				
5.4.3	Vehicles	40.00	VEHICLE/DAY	<ul style="list-style-type: none"> <li>- Or part thereof</li> <li>- Free storage of one (1) Business Day</li> </ul>
5.4.4	First chargeable six (6) days	2.10	MT/DAY or CBM/DAY	<ul style="list-style-type: none"> <li>- Or part thereof</li> <li>- Applicable charge will be based on the greater of weight (MT) or volume (CBM)</li> </ul>
5.4.5	After the sixth chargeable day	3.10	MT/DAY or CBM/DAY	
5.4.6	After the fourteenth chargeable day	6.18	MT/DAY or CBM/DAY	
<b>5.5 STORAGE RENT - EXPORT BOUND/TRANSSHIPMENT</b>				
5.5.1	First chargeable six (6) days	2.06	MT/DAY or CBM/DAY	<ul style="list-style-type: none"> <li>- Or part thereof</li> <li>- Free storage of fourteen (14) Calendar Days</li> <li>- Applicable charge will be based on the greater of weight (MT) or volume (CBM)</li> </ul>
5.5.2	After the sixth chargeable day	3.10	MT/DAY or CBM/DAY	
5.5.3	After the fourteenth chargeable day	6.18	MT/DAY or CBM/DAY	
<b>5.6 CHASSIS PARKING</b>				
5.6.1	Chassis parking	40.00	20 FT CHASSIS/DAY	<ul style="list-style-type: none"> <li>- Or part thereof</li> </ul>

<b>5.7 DELAYED COLLECTION OF DELIVERY CARGO</b>				
5.7.1	Delayed collection of delivery cargo	40.00	BILL OF LADING/DAY	- Or part thereof - For commercial cargo only - Applies to cargo delivered by Customs but remains uncollected at Warehouse at close of business
<b>5.8 REQUEST FOR OVERTIME SERVICES</b>				
5.8.1	Monday to Friday (15:00 -19:00 hours)	728.00	PERIOD	- \$182.00 per hour (minimum 4 hours)
5.8.2	Monday to Friday (19:01- 07:00 hours)	970.00	PERIOD	- \$242.50 per hour (minimum 4 hours)
5.8.3	Saturday and Sunday	1,940.00	8 HOURS	- \$243.00 per hour (minimum 8 hours)
5.8.4	Public Holidays	2,304.00	8 HOURS	- Or part thereof
<b>5.9 STUFFING</b>				
5.9.1	Dry container	227.00	TEU	
5.9.2	Reefer	340.00	TEU	
5.9.3	Special cargo	340.00	TEU	
5.9.4	Dangerous/hazardous cargo/requiring specialized handling	567.00	TEU	
<b>5.10 FORKLIFT UTILISED AT TYRE WAREHOUSE</b>				
5.10.1	Forklift utilised at Tyre Warehouse	283.00	8 HOURS	- Pressed packed containers

## 6.0 WAREHOUSE SERVICES - LESS THAN CONTAINER LOAD (LCL) EXPORTS

NO.	DESCRIPTION	RATE US\$	PER	NOTES
<b>6.1 STUFFING</b>				
6.1.1	Dry container	0.03	KG	- Applicable charge by weight in kilograms (kg) or by measurement in cubic metres (cbm) whichever is greater - Minimum of US\$50.00 per box
6.1.2	Dry container	25.00	CBM	
6.1.3	Dangerous/hazardous cargo	0.07	KG	
6.1.4	Dangerous/hazardous cargo	55.00	CBM	
<b>6.2 STORAGE RENT</b>				
6.2.1	First chargeable six (6) days	2.15	MT/DAY or CBM/DAY	- Or part thereof - Free storage of seven (7) Business Days - Applicable charge will be based on the greater of weight (MT) or volume (CBM)
6.2.2	After the sixth chargeable day	3.25		
<b>6.3 REQUEST FOR OVERTIME SERVICES</b>				
6.3.1	Monday to Friday (15:00 -19:00 hours)	330.00	PERIOD	- \$82 per hour (minimum 4 hours)
6.3.2	Monday to Friday (19:01- 07:00 hours)	440.00	PERIOD	- \$110 per hour (minimum 4 hours)
6.3.3	Saturday and Sunday	1,000.00	8 HOURS	- \$125 per hour (minimum 8 hours)
6.3.4	Public Holidays	1,500.00	8 HOURS	- \$188 per hour (minimum 8 hours)
<b>NOTES:</b>				
i. The empty container will be delivered from the Port of Point Lisas to PLIPDECO's Warehouse for stuffing at no additional cost.				
ii. The full container will be delivered to the Port of Point Lisas for export at no additional cost.				
iii. Weighbridge charges will be for the account of the shipper.				



## 7.0 WAREHOUSE SERVICES - FULL CONTAINER LOAD (FCL)

NO.	DESCRIPTION	RATE US\$	PER	NOTES
<b>7.1 UNSTUFFING CHARGES</b>				
7.1.1	Dry container(s)	300.00	20 FT	- All unstuffing charges include transportation of full container from the Port to Warehouse and loading of cargo onto customer's transport
7.1.2	Dry container(s)	520.00	40/45 FT	
7.1.3	Dangerous/hazardous cargo	450.00	20 FT	- The material safety data sheet (MSDS) must be provided in advance and is subject to approval for unstuffing by PLIPDECO's Health, Safety and Environment (HSE) Department
7.1.4	Dangerous/hazardous cargo	820.00	40/45 FT	
7.1.5	Cargo on flatrack or open top containers	300.00	20 FT	
7.1.6	Cargo on flatrack or open top containers	520.00	40/45 FT	
<b>7.2 STORAGE RENT</b>				
7.2.1	From first chargeable day	2.00	CBM/ DAY	- Free storage of three (3) Business Days from date of unstuffing
<b>7.3 REQUEST FOR OVERTIME SERVICES</b>				
7.3.1	Monday to Friday (15:00 -19:00 hours)	330.00	PERIOD	- \$82 per hour (minimum 4 hours)
7.3.2	Monday to Friday (19:01- 07:00 hours)	440.00	PERIOD	- \$110 per hour (minimum 4 hours)
7.3.3	Saturday and Sunday	1,000.00	8 HOURS	- \$125 per hour (minimum 8 hours)
7.3.4	Public Holidays	1,500.00	8 HOURS	- \$188 per hour (minimum 8 hours)
<b>NOTES:</b>				
i. The full container discharged at the Port of Point Lisas will be delivered to PLIPDECO's Warehouse and the empty container will be returned to the Port of Point Lisas at no additional cost ONLY if PLIPDECO's transport is utilised.				
ii. All Customs and Excise charges for containers that are delivered to premises (PLIPDECO's Warehouse) shall be for the account of the customer.				

## 8.0 SECURITY SERVICES

NO.	DESCRIPTION	RATE US\$	PER	NOTES
<b>8.1 GATE PASSES</b>				
8.1.1	Daily Pass - Hauliers	3.00	PASS	- Passes for Port access
8.1.2	Weekly Pass - Hauliers	6.00	PASS	
8.1.3	Monthly Pass - Hauliers	12.00	PASS	
8.1.4	Annual Pass - Hauliers	22.00	PASS	
8.1.5	Annual Pass - Agents	30.00	PASS	
<b>8.2 LOAD ESCORT ON THE INDUSTRIAL ESTATE</b>				
8.2.1	Weekdays (Monday to Friday)	35.00	HOUR	<ul style="list-style-type: none"> <li>- Or part thereof</li> <li>- Request for a load escort must be made at least 8 hours in advance</li> <li>- All escorts will be done during the following scheduled times:                             <ul style="list-style-type: none"> <li>• Weekdays: 0900 hours to 1015 hours, 1300 hours to 1415 hours and 1700 hours to 0600 hours</li> <li>• Weekend and Public Holidays: as per Applicant's request</li> </ul> </li> <li>- Prior to transport, the Applicant is responsible for the following:                             <ul style="list-style-type: none"> <li>• Obtaining approval from both the Telecommunications Services of Trinidad and Tobago (TSTT) and the Trinidad and Tobago Electricity Commission (T&amp;TEC) for all cargo over 15 feet in height</li> <li>• The Applicant will be responsible for coordinating with any Tenants of the Industrial Estate who would be affected by the move. There must also be minimum disruption to any operations on the Industrial Estate</li> </ul> </li> </ul>
8.2.2	Weekends	65.00	HOUR	
8.2.3	Public Holidays	120.00	HOUR	
<b>8.3 SECURITY - MONITORING CLASS 1 IMO DANGEROUS CARGO CONTAINERS</b>				
8.3.1	Weekdays (Monday to Friday)	17.00	HOUR	<ul style="list-style-type: none"> <li>- Containers not taken by direct delivery and stored on Port</li> <li>- A minimum of four (4) hours or part thereof is applicable</li> </ul>
8.3.2	Weekends	33.00	HOUR	
8.3.3	Public Holidays	50.00	HOUR	
<b>8.4 SECURITY - SHIP GANGWAY</b>				
8.4.1	Weekdays	55.00	8 HOUR SHIFT /OFFICER	<ul style="list-style-type: none"> <li>- Or any part thereof</li> <li>- Mandatory for all vessels calling at the Port</li> </ul>
8.4.2	Weekends	110.00		
8.4.3	Public Holidays	165.00		
<b>8.5 UNAUTHORIZED PARKING</b>				
8.5.1	Clamping of light motor vehicles	33.00	VEHICLE	- Payment to be made at the Port Cashier during the hours of 0800 to 1800 Monday to Friday
8.5.2	Clamping of trucks/heavy motor vehicles	77.00	VEHICLE	

NO.	DESCRIPTION	RATE US\$	PER	NOTES
<b>8.6 TRAFFIC MANAGEMENT ON THE INDUSTRIAL ESTATE</b>				
8.6.1	Weekdays	40.00	HOUR	- Or part thereof
8.6.2	Weekends	60.00	HOUR	- Requests must be made at least 48
8.6.3	Public Holidays	80.00	HOUR	hours in advance
<b>8.7 DRONE PHOTOGRAPHY &amp; VIDEOGRAPHY FOOTAGE</b>				
8.7.1	Weekdays	80.00	HOUR	- Or part thereof
8.7.2	Weekends	100.00	HOUR	- Requests must be made at least 72
8.7.3	Public Holidays	120.00	HOUR	hours in advance

\*\*\*\*\*§§§\*\*\*\*\*